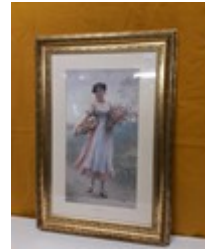


Lot No **Description**

1 An oblong gilt framed wall hanging mirror with acanthus scroll pediment.



2 Modern gilt framed print "Spring Flowers" 62cm x 90cm.



3 Victorian glazed earthenware water softener with lions mask handles.



4 Large glazed earthenware 6 gallon barrel.




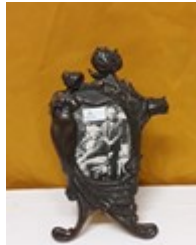




5 Large pair of carved teak novelty fork and spoon.



6 Walnut Queen Ann leg storage piano stool with a selection of sheet music.



Lot No	Description	
7	2 pairs of brass wall gas lighting sconces with later electrical conversions.	
8	Small collection of fret carved photo frames.	
9	Various modern oriental style vase and planters.	
10	Art Nouveau style bronzed metal photo frame.	
11	Mixed tray lot of metalwares to include servants bell pull, brass Greenman mask cabinet handles, gas light fittings, tea caddy and reproduction cast iron door knockers.	
12	Tray of assorted figurines to include capodimonte style cello player, Humel type figures and 11 oriental figurines.	

Lot No

Description

13 Mixed tray lot of assorted decorative cutlery.



14 2 x Victorian Barrister/Judge wig hangers.



15 An A.K. & Sons brass cooking range trivet with Art Nouveau floral decoration and an unusual brass hook.



16 Art Nouveau copper and brass spirit kettle with reticulated decoration complete with burner.



17 Small copper and brass spirit kettle with floral repousse decoration on scrolled stand.



18 Mid century continental figural lamp of a water carrying woman on onyx base with floral ribbon and garland decorated shade.



Lot No**Description**

19

French Biot pottery garlic soup pot.



20

Brown Westhead Moore faience part dinner service decorated with wild birds.



21

Victorian milk glass candle snuffer, Vaseline glass shade and other glass lamp shades.



22

Mother of Pearl and silver plated cocktail set comprising bottle opener, corkscrew, fruit knife and ice hammer.



23

Victorian brass and iron trivet with pierced cast leaf decoration together with an English made repousse decorated brass oil lamp.



24

A pair of modern Art Nouveau style pottery wall hangings.



Lot No **Description**
25 3 x Art Nouveau designed leatherette photo frames.



26 Mixed lot of assorted Edwardian and later photo frames, small gilt framed print "The Gleaners" and a pair of framed St Petersburg signed plaques.



27 2 continental Rumtopf pots, 2 West German lava vases and a large West German jug.



28 1930's brass table lamp with mounted parakeets and glass bird decorated shade.



29 Brass Art Nouveau style table lamp with floral decorated glass shade,.



30 Mid century brass open barley twist table lamp with floral decorated glass shade.



Lot No **Description**
31 Edwardian brass table lamp with floral decorated glass shade.



32 Reproduction Art Nouveau lamp modeled as a lady holding a flaming bowl.



33 A large carved walnut photo frame with arched top and grapes and vine columns and pediment.



34 A modern oak mantle clock with quartz movement and horse head decoration.



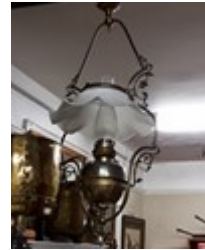
35 Modern chalk bust of a young lady.



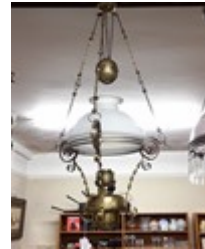
36 Modern chalk bust of a lute playing young woman.



Lot No **Description**
37 Victorian hanging oil lamp with decorative brass frame and milk glass frilled shade.



38 Victorian rise and fall hanging oil lamp with decorative brassware framing and milk glass shade.



39 Large brass coal bucket with riveted bandings, lions mask handles and paw feet.



40 Victorian hammered brass coal scuttle.



41 An embossed brass planter with grapes and vine decoration and lions mask handles.



42 An Edwardian swan neck handled jug and bowl set (bowl damaged) and a similar swan neck handle melon fluted water jug.



Lot No

Description

43

An Edwardian wild rose pattern water jug, a modern swan neck handled water jug and a floral decorated jug.



44

Collection of Victorian and later naval belt buckles, scabbards and sword handle parts.



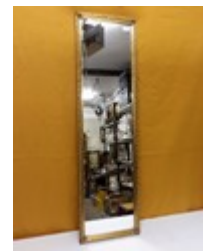
45

A rare Edwardian pair of jug and bowl sets with matching peony floral decoration.



46

Oblong gilt framed hall mirror 36cm x 127cm.



47

3 framed illustrated London News Monkey brand advertisements and a similar smaller advertisement.



48

An Edwardian oak framed print of a young girl.



Lot No **Description**
49 A large pine framed wall hanging mirror 102cm wide x 72cm high.



50 Assorted tray lot of 1930's pottery to include Majolica pineapple jug, Beswick trio of jugs, Sylvac pot, Carlton ware preserve pots, etc.



51 Tray lot of assorted continental Bisque china figurines.



52 Mixed lot to include Doulton improved foot warmer, various cream pots, advertising bottles, etc.



53 A pair of moulded glass dishes with brass owl decorated lids, owl matchbox cover, specimen vase and pin dish.



54 Victorian gypsy mirror with etched glass and gilt inner mount with thistle decorated frame.



Lot No

Description

55

A primitive Victorian village scene signed E. Inman 1893 in a crossed pitch pine frame.



56

An Edwardian framed print "Simply to Thy Cross I Cling".



57

Tray lot of vintage 35mm cameras to include Olympus, Zenith, Pentax and Cannon and various associated lenses.



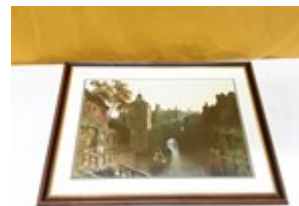
58

Large tray lot of Noritake 12 place cutlery.



59

Modern framed print "The Glory Hole, Lincoln".



60

Edwardian pair of oak framed gypsy mirrors.



Lot No **Description**
61 Composite and gilt framed mirror with floral and swallow painted decoration.



62 Assorted EPNS to include cake baskets and galleried tea tray.



63 Victorian mahogany writing slope for restoration and a small rosewood and mother of pearl inlaid jewellery box.



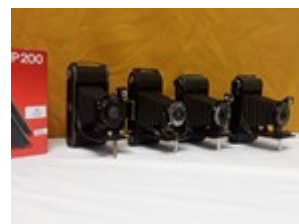
64 A pair of hand painted plaques with pokerwork frames.



65 3 cast iron pans and an iron kettle.



66 4 vintage folding cameras and an Agfascop 200.



Lot No **Description**
67 Mixed shelf lot to include field glasses, vintage cameras,
Sony walkman, Olympus cam media, etc.



68 A painted plaster of paris nativity scene.



69 40 pieces of Mid Winter Stonehenge pattern table wares.



70 Minolta X700 35mm camera with 135mm spare lens, light
meter, carry bag, etc.



71 Victorian mahogany cased American twin weight wall
clock.



72 6 x assorted oil lamp and table lamp shades.



Lot No

Description

73

A shelf lot of cut and etched drinking glasses.



74

Shelf lot of assorted cut and pressed glass to include candlesticks, dessert bowls, dressing table set, whiskey tumblers and a Georgian glass rummer.



75

A pair of continental Vienna lidded urns and a lotus ware gilt beaded pot-pouri pot.



76

A pair of Wedgwood floral and gilt decorated urns and a pair of Coalport Paddington Bear figurines.



77

A pair of continental porcelain urns, continental Dresden figurine and a damaged Coalport John Constable lidded urn.



78

Collection of modern framed prints of vintage advertising, a pair of religious prints and a modern plaque of an angel.



Lot No **Description**
79 5 various 1930's and later light shades.



80 Various Victorian and later jardiniere pots to include Devonware, Royal Doulton and Coalport.



81 2 shelves of pottery, porcelain and glassware to include Shelley tea cup and saucer, Portmeirion Botanical Gardens vase, various cabinet plates and a selection of pressed and cut glass.



82 An unopened Strand Edition Sherlock Holmes and various leather bound furnishing books.



83 3 x copper and brass oil lamps.



84 10 pieces of Victorian enamelled green glass ware.



Lot No **Description**
85 15 pieces of Victorian enamelled green glass ware.



86 14 pieces of late 18th century Newhall porcelain.



87 A set of 8 gilt framed Lowry prints.



88 Collection of various jewellery and trinket boxes, burr walnut marquetry paper mache, etc.



89 An olive wood axe picture easel and a turned elmwood towel rail.



90 1960's Goblin teasmade.



Lot No **Description**
91 An Edwardian winter time framed print, a pair of framed Angel prints and a pair of modern framed Arthur Hopkins prints.



92 A chalk figure of a 1930's dancing girl.



93 Wooden model of a 2 sail fishing smack.



94 Shelf lot of assorted early 20th century photo frames.



95 Shelf lot of assorted Victorian and later glassware to include green enamelled vase, cranberry vase, hock glasses, wine glasses and various Bohemian red and green hock glasses.



96 6 assorted mid century light shades.



Lot No **Description**
97 Mixed lot to include wooden cigarette box, cased table mats, card case, chess pieces, etc.



98 A pair of carved oak Greenman fire bellows.



99 Set of modern brass and iron kitchen scales and accompanying bell weights.



100 American gingerbread mantle clock.



101 American gingerbread striking mantle clock by The New Haven Clock Company.



102 5 assorted early 20th century light shades.



Lot No

Description

103 5 early 20th century light and lamp shades.



104 An art deco Walther & Sohne peach coloured mermaid 5 piece dressing table set and a 1930's galleon blue glass dressing table set.



105 Shelf lot of decorative books to include 1918 Bibbys Annual, Music Masterpieces, gilt spine decorative books and a quantity of Victorian style scraps.



106 A pair of gilt framed coloured prints, classical maidens and a gilt picture frame.



107 A large 12 light brass chandelier.



108 An Edwardian rise and fall hanging oil lamp with floral decorated shade and luster drops.



Lot No

Description

109

William Strutt gilt framed cristoleum of a child and animals.



110

Victorian gilt framed cristoleum of a park scene.



111

Large oak framed print "End of the Village".



112

A modern framed print "The Odalisque".



113

An unusual cast brass stick stand with hunting dog, rifles and game birds.



114

An oak framed fire screen with floral beadwork decoration.



Lot No **Description**
115 Mahogany framed fire screen with floral needlework panel.



116 A large circular Royal Worcester Contessa pattern gilt decorated soup tureen.



117 2 Rubens ware pattern vases by Hancock & Sons.



118 3 pairs of decorative brass candlesticks modelled as birds.



119 Cased set of aesthetic stylised pickle forks, cased set of teaspoons and tongs decorated with birds and insects and a cased butter knife and preserve spoon.



120 Mahogany cased set of mother of pearl handle fish knives and forks.



Lot No **Description**
121 Mahogany cased set of 12 pairs of mother of pearl handled
dessert knives and forks.



122 12 place canteen of wrythen handled mother of pearl
dessert knives and forks and a similar cased set of dessert
knives and forks.



123 Mahogany and inlaid canteen of cutlery by George Butler &
Co., Trinity Works, Sheffield, the handles decorated with
game birds.



124 Mahogany cased set of fish knives, forks and servers with
decorative engravings and silver shanks.



125 A comprehensive Royal Doulton Rondelay tea, dinner and
coffee service, approximately 110 pieces.



126 Victorian cast iron base oil lamp, modelled with birds and
vines with yellow porcelain vessel and etched glass shade.



Lot No **Description**
127 An Edwardian shaped top walnut 2 tier occasional table.



128 Cased set of art nouveau style ice cream spoons



129 Mahogany cased set of 12 dessert knives and forks.



130 An oak cased canteen of cutlery by John McClory & Sons, Sheffield.



131 Mahogany cased set of 6 engraved bladed fish knives and forks.



132 Cased set of EPNS dessert spoons and cake forks.



Lot No**Description**

133

A cased pair of EPNS preserve spoons and a cased set of art nouveau style teaspoons and tongs.



134

Cased set of mother of pearl handled fish knives and forks.



135

Border Fine Arts mounted polar bear and her cubs
145/850, signed R.T. Roberts.



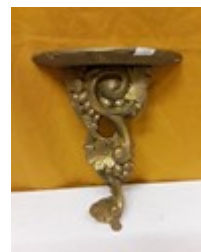
136

Wicker picnic basket and fitted contents.



137

A gilt painted wooden carved wall shelf.



138

A brass adjustable desk lamp.



Lot No

Description

139

Pair of Wai ming, Hong Kong reticulated large ginger jars.



140

Amile Galle style cameo glass lamp with owls on a branch.



141

Brass desk lamp.



142

A quantity of decorative china cups and saucers, various makers to include Shelley, Duchess, Aynsley, etc.



143

A modern bust of a Victorian lady.



144

A pair of seated figures of children with leaf bowls.



Lot No **Description**
145 An unusual wall hanging mirror, the frame modelled with owls.



146 Victorian brass fire fender.



147 An assortment of 6 Edwardian oak picture frames.



148 3 florally decorated chamber pots.



149 Collection of poker work items to include picture frame, trinket boxes and vases.



150 Various Victorian brass candlesticks, Griffin candlestick and butterfly menu holder.



Lot No **Description**
151 1950's Bagley glass butterfly dressing table set and a
 porcelain Chang pattern dressing table set.



152 Mid 20th century jug and bowl set.

153 Various brass and metal ware items and oil lamp parts.



154 Large brass lidded coal bucket on paw feet.



155 Cast iron door stop modelled as sea serpents and a similar
 ram door stop.



156 Various small oak picture frames and prints.



Lot No **Description**
157 Shelf lot of game lidded casserole pots and similar table wares.



158 3 Victorian leather bound family Bibles.



159 Royal Doulton John G. Tongue, Whyte & Mackay, Scotch Whiskey "Snowy Owl" and "Merlin".



160 Pair of Staffordshire spaniels.



161 2 x Staffordshire figures Prince Albert and the lion tamer.



162 Continental brass photo frame with a roaring lion together with a gilt metal photo frame modelled with vine leaves.



Lot No**Description**

163 An Edwardian Father Time brass plaque calendar.



164 Large brass photo frame modelled as a Norseman's boat with cherub putti.



165 2 Walther & Sohne art deco Windsor vases both with chipped bases.



166 Pair of handpainted waste paper baskets.



167 Royal Doulton Sydenham pattern wash jug and bowl.



168 Vintage HMW model 102 portable gramophone.



Lot No **Description**
169 Pair of heavy brass photo frames with modelled flowers and insects.



170 A pair of Japanese picture frames with 3 claw dragons.



171 An art nouveau style pokerwork picture frame.



172 Pair of Edwardian pierced white metal and felt photo frames with vitreous plaques together with a large brass photo frame.



173 1930's oak art deco style 2 hole Smiths chiming mantle clock.



174 1920's oak Westminster chime mantle clock.



Lot No

Description

175 Edwardian ginger oak photo frame.



176 Set of vintage Pooley commercial butter scales.



177 Tray lot of figurines to include Royal Doulton character jug "Porthos" D6440, 2 modeled elephants, as stalking tiger and other items.



178 Modern figural table lamp of a grape picker.







179 A large pair of French spelter figures "Retour des Champs" and "L'Ami Fidele" by L & F Moreau standing 20" tall.



180 Victorian mahogany campaign folding card table.



Lot No	Description	
181	Edwardian 3 tier mahogany folding cake stand.	
182	Edwardian 3 tier mahogany folding cake stand.	
183	A gilt metal framed shield shaped mirror with floral and acanthus decoration.	
184	Tray lot of assorted plastic and die cast farm animals, toys and buildings.	
185	Boxed lot of various Corgi, Dinky and other die cast cars, lorries and vehicles.	
186	Victorian Veritas oil lamp with brass column base, green bowl and milk glass mushroom shade.	

Lot No **Description**
187 Vintage brass Pullman railway carriage table lamp with floral glass shade.



188 2 Walther & Sohne blue and green glass dressing table sets, both with the Egyptian 3 Maiden pattern.



189 2 Sowerby butterfly pattern dressing table sets.



190 An Edwardian mahogany framed oval mirror with boxwood string inlays.



191 Edwardian oval composite frame wall hanging mirror.



192 4 assorted 20th century oriental style vases.



Lot No

Description

193

An art nouveau W & W Kosmos small oil lamp with jewelled shade.



194

An Edwardian brass column oil lamp with milk and florally painted vessel and cream wrythen shade.



195

A tray of 8 assorted bisque continental figurines.



196

Mixed tray lot of pottery and porcelain to include crested wares, decanter labels, continental trinkets, resin Lincoln Imps, etc.



197

A pair of French spelter figures of knights on horseback.



198

2 Walther & Sohne Nymphen dressing table sets (various small chips).



Lot No

Description

198A

Modern ornate gilt framed wall hanging mirror,.



199

Victorian brass based Duplex oil lamp with embossed mint green vessel and floral acid etched shade.



200

Edwardian cast iron base floral decorated oil lamp with amber glass vessel and frilled peach shade with handpainted butterfly and bird decoration.,



201

Mixed tray lot of Walther & Sohne and other art deco glassware to include semi naked maiden lamp base, dancing maidens vase, storks centrepiece, etc.



202

French Gaudard nursery oil lamp the base modeled with 3 jewel eyed owls and ivy leaf bowl with milk glass mushroom shade.



203

8 Victorian opaline glass floral decorated vases.



Lot No **Description**
204 Various Edwardian and later coloured glass dessert sets.



204A Modern teak framed coloured print of a Lancaster bomber.



205 Mixed tray lot of biscuit glazed pottery to include biscuit barrel, jug, fruit bowl, cheese dish, etc.



206 2 hexagonal and octagonal bevel edged wall hanging mirrors.



207 2 Walther & Sohne Pierette and Peirrot dressing table sets.



208 4 pairs of spelter figures to include "Pecheur" and "Pecheuse", Cavalier and wife, "Violette" and "Pensee"



Lot No**Description**

209

Various 1930's coloured glassware to include L.E. Smith Turkey, Bagley Angel candlesticks, Jules Lang cherubs centrepiece and 2 art deco kneeling maidens.



210

A pair of Sowerby amber glass Hermes flower bowls, a brown glass Sowerby elephant bowl and smaller similar green bowl together with a Sowerby pink lady powder bowl.



211

A pair of Belgian spelter Marley horses.



212

A large modern cast figural lamp of a draped young woman holding a torch after Henri Dumaige standing 39" tall.



213

An early 20th century oil lamp with decorative cast iron base, floral painted pale blue vessel and etched globe shade.



214

An aesthetic movement design, opaline glass Kosmos Brenner lamp decorated with snails, birds and foliage together with a porcelain based floral decorated oil lamp.



Lot No **Description**
215 Large gilt framed coloured print of an early 20th century harvest scene.



216 A pair of gilt framed oil on board lakeland scenes.



217 Quantity of Denby Circles table wares, Duchess Greensleeves teaset and a 1960's Johnson Bros. coffee set.



218 An American aesthetic Reed & Barton dessert basket, WMF Chinese pattern posy holder, plated preserve pot, egg coddler, notepad holder, napkin rings and a cased pair of modern Darlek condiment pots.



219 Mixed tray lot of metalwares to include copper candle holders, oriental style brass vase, butter dishes, decanter labels, etc.



220 2 cutglass decanters, bottle and stopper, cut fruit bowl and a Studio glass peacock etched vase.



Lot No **Description**
221 2 pairs of continental bisque figurines, a similar Goodnight
figurine and 2 simiiar figures,.



222 A gilt frame oileograph of Jesus in the stable.



223 Waterford cutglass flower vase and a small modern
Waterford John Rocha pin dish.



224 2 pairs of continental bisque figurines.



225 6 leather bound volumes Oeuvres Dramatiques De N.
Destouches (The Dramatic Works by N. Destouches)
1811, 8 volumes 1828 edition Memories Duc De Rovigo
Pour Serveir A L'Histoire De L'Empereur Napoleon
(Memories Duke of Rovigo to Serve the History of
Napoleon Emperor) and 6 French volumes Victor Hugo
1853.



226 An Edwardian coloured framed print "The Belle of the
Village" in crossed polished frame with applied brass
swallows.



Lot No

Description

227

A large oak framed coloured print of a shepherdess.



228

A fret carved folding wall shelf of a duck on a pond with bullrushes.



229

Walther & Sohne Mariana bowl and flower holder (chips to the rims) and a similar blue glass pelican bowl and table centre.



230

An oak framed wall hanging "Easter Dawn".



231

Limited edition Julian Williams black and white print 77/150 of a wading bird.



232

A pair of framed Oliver Stockman cristoleums of classical women and a small oleograph of a Victorian continental woman.



Lot No

Description

233

A mixed tray lot of continental bisque figures, chariots, shells, swan sleighs and spill vases.



234

Continental porcelain and Amphora figural posy dish with young children and a continental porcelain bedroom clock set modeled with swans and gargoyles mouth waterfalls.



235

Royal Dux Bohemia figural bowl of young lovers by the water.



236

A pair of hammered copper shaped photo frames with good luck horseshoe and vine leaves.



237

Large Royal Doulton figurine "Sorree" and 2 smaller figures "Fair Maiden" and "Cherie" and a musical figurine "Enchanted Evening".



238

Italian burr satin wood and inlaid brass galleried tea tray.



Lot No

Description

239

2 gilt framed prints to include The Ploughman and the Sea and a watercolour of Misson Post Office.



240

3 Edwardian oak picture frames.



241

A collection of cut glass ware to include Harbridge bowl, Webb and Stuart cut bowls and other smaller cut glass ware.



242

6 x 1930's floral patterned vases to include Charlotte Reid Crown Ducal, Crown Devon Radford ware and a Clarice Cliff "My Garden" jug.



243

A pair of continental porcelain figural twin candlesticks and a bisque porcelain swan sleigh.



244

A tray lot of early 20th century and later small and miniature decorative picture frames.



Lot No

Description

245

An EPNS Samuel Peace 3 piece cased carving set.



246

Gibson's 4 piece teaset with matching teapot stand with art nouveau floral decoration and luster highlights.



247

Carved mahogany box lid with deep carved terrier "Best in Show".



248

2 trays of decorative china and crockery to include Paragon tea service, modeled bird figurines, Masons jug, Jasperwares, trinket dishes, etc.



249

Victorian Imari pattern ewer, similar fruit bowl on stand, Gaudy Welsh fruit bowl and a Royal Doulton Arcadia fruit bowl.



250

Adler German wooden tenor recorder, Aulos treble recorder, Alder descant recorder and 4 Aulos descant recorders.



Lot No

Description

251

Victorian opaline and gilt decorated glass oil lamp.



252

Victorian cast iron base oil lamp with green glass vessel and etched shade.



253

Gilt framed watercolour "Great Expectations" signed by Rose Douglas circa 1895.



254

Victorian brass column oil lamp with pink shell embossed vessel and etched cranberry shade.



255

Mixed tray lot of metalwares to include EPNS entree dish, butter dish, sugar scuttle, specimen vase, cruet and other items.



255a

An EPNS 3 bottle pickle cruet.



Lot No**Description**

256

3 x limited edition York Minster etched glass chalices.



257

Victorian opaline glass oil lamp with handpainted floral and butterfly design.



258

A collection of 1930's and later coloured glassware to include fish centrepieces, fruit bowls, night sticks, etc.



259

A Coalport Elite Gold pattern tea and dinner service comprising 48 pieces.



260

Duchess floral decorated Tranquility pattern tea service, various decorative flatwares, Royal Worcester cake stand, cut glassware, Aynsley Pembroke vase and a Woods blue and white milk jug.



261

Modern St. James gilt quartz carriage clock with onyx borders.



Lot No

Description

262

3 vintage photograph frames all with various bird decorations.



263

2 Victorian cristoleums lady playing the lute and lady with chrysanthemums.



264

Pair of teak horseshoe photo frames.



265

Victorian framed cristoleum an unexpected guest.



266

Pair of Benaya decorative ceramic tiles.



267

Edwardian Napoleon helmet inlaid mahogany chiming mantle clock.



Lot No **Description**
268 1930's Westminster chime mantle clock together with a small Hac-make oak alarm clock.



269 A large gilt framed coloured print "Charge of the Royal Scots Greys at Waterloo" from the original painting by Elizabeth Butler.



270 Large gilt framed print "Calling the Roll" after an engagement in Crimea from the original by Lady Elizabeth Butler.



270a Large gilt framed oil on canvas of an African river scene.



271 Victorian seahorse head mourning parasol with silver ferrule (badly damaged), a modern terrier head walking cane and a 1930's gents umbrella.



272 Victorian etched cranberry glass oil lamp shade together with a pair of frilled rim, etched and spotted oil lamp shades.



Lot No

Description

273

2 floral decorated cast iron base paraffin lamps and a Celadon glazed pottery oil lamp base decorated with wading bird panels.



274

Wedgwood blue ground biscuit barrel with EPNS leaf and floral decorated handle and lid and hunting scene slipware together with a pair of Tunstal Jasperware pots.



275

Brass mounted Antelope horn toasting fork.



276

1960's Studio pottery sculpture "Wrestler" by Stefan Gorski.



277

A large spelter figure "Lebellule" from the original bronze by Auguste Moreau together with a cast metal Bacchus style wine ewer (damaged).



278

3 x spelter figures "Taquinerie", "Le Pecheur" and "Pecheur".



Lot No

Description

279

3 cast metal objects George Slaying the Dragon, Winged Angels with Jesus and Mary and an ashtray decorated with frogs and an elk.



280

Capodimonte figure of a drunken man and a similar figure of a lady with water pitcher.



281

Newhall tea bowl and saucer in the Target pattern, Newhall cobalt blue and gilt decorated tea cup and saucer together with other Newhall tea cups and saucers.



281a

A pair of Barmouth Studio pottery drip glaze plates.



282

3 small pairs of spelter figurines, Cavaliers, Rt and Sculpture, Le Colporteur and La Bouquetiere.



283

3 cased sets of bone handled and EPNS fish servers.



Lot No **Description**
284 Framed street map of Lincoln by local doctor J. N. Nicklin.



285 A pair of gilt framed watercolours of rural lake scenes.



286 Walther & Sohne Peter Pan green glass table centre piece with lily pad bowl, slight chipping.



287 1930's Brockwitz parakeet vase.



288 1930's STS Abel green glass twin bird bowl with a matching brown glass example.



289 STS Abel blue glass fish bowl and stand.



Lot No **Description**
290 A pair of Libochovice brown glass bird specimen vases.



291 1930's Brockwitz pressed glass bowl with fish handles.



292 Hexagonal amber glass fruit bowl decorated with kingfishers.



293 A large Walther & Sohne amber glass fish bowl on stand with boy on a fish centre piece (damaged).



294 A pair of cast metal photo frames decorated with winged Eagles and Lions masks.



295 Hexagonal brass framed wall hanging mirror with grapes and vine decoration.



Lot No **Description**
296 Daum green Studio bowl together with green Studio bubble glass dish.



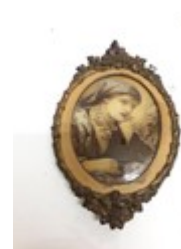
297 An American early 20th century oak cased castellated clock with turrets, cannons and portcullis.



298 A French tortoiseshell mantle clock with meloned Arabic and Roman numeral enamel dial and gilt ormolu mounts with Samuel Marti, Paris medal 1900 movement.



299 A small oval cristoleum in gilt composite grapes and vine decorated frame.



300 Victorian cast metal fox in the hen house mantle clock, the case cast with the fox chasing the hen, vine leaves and crowing rooster, with enamelled shield Roman numerals and striking movement.



301 An arts and crafts fretwork 4 aperture folding photo frame.



Lot No	Description
302	An Edwardian garden gate hanging photo frame with grapes and vine decoration.
303	2 Lalique bronzed glass insects Scarab and Beetle.
304	A green glass Lalique starfish.
305	Lalique green glass goldfish.
306	French brass clock set with handpainted porcelain panels decorated with nesting birds, 2 matching urns with similar decoration.
307	An Edwardian floral decorated porcelain bedroom clock.



Lot No **Description**
308 Victorian brass easel clock with pierced fret decorated art nouveau style frame, enamel Arabic numeral dial with ribbon and floral swags.



309 British United Clock Co. wind up small brass easel clock with wooded grapes and vine frame.



310 British United Clock Co. winding brass easel clock with silvered dial and central cherub, missing bracket.



311 2 tall Indian brass candlesticks and a pair of similar smaller specimen vases.



312 A brass art nouveau decorated circular photo frame.



313 Bronzed cast metal photo frame decorated with winged horses, rams head and twin cherubs.



Lot No **Description**
314 Small Victorian gilt framed cristoleum of a wine drinking couple.



315 A pair of bronzed brass oriental style vases decorated with tree and bird design with open wing cormorant handles.



316 Pair of brass art nouveau style easel photo frames.



317 Rosewood framed coloured picture of 2 Middle Eastern women.



318 Conrad Kiesel cristoleum with later gilt frame.



319 Victorian faux slate and marble mantle clock with reeded brass columns.



Lot No **Description**
320 Victorian framed cristoleum of a young woman with an owl
in the foreground.



321 An oak framed cristoleum of Leonardo Da Vinci's Last
Supper.



322 Victorian gilt framed cristoleum of a lute playing lady.



323 Composite framed cristoleum Ladies at the Gate together
with a gilt framed cristoleum of a semi nude.



324 A pair of brass angel candlesticks together with a pair of
brass candlesticks modeled with swifs.



325 A heavy brass horseshoe photo frame and a pair of brass
Bexhill Lady bookends.



Lot No**Description**

326

Framed cristoleum of a Cavalier.



327

A pair of light blue Sowerby glass lamps with sea serpent and fluted bodies.



328

A pair of Sowerby milk glass oil lamps matching previous lot together with a similar blue glass lamp.



329

3 pressed glass vases modeled as hands holding cornet torches.



330

An Edwardian copper and brass Thermidor oil lamp with tri scroll supports and etched floral decorated shade.



331

Small French copper and brass oil lamp with hammered egg shaped body on tri hoof supports.



Lot No

Description

332

Small continental oil lamp with turned clawed Griffin base, green glass vessel with Youngs Brilliant burner.



333

Victorian floral decorated opaline glass oil lamp and a similar narrow funnel oil lamp.



334

A small French brass oil safety lamp.



335

A pair of art deco Libochovice blue glass vases formed with linked armed maidens.



336

A Jape Frere French cast metal mantle clock with late Victorian decoration including bubble blowing children, floral and acanthus leaf surmounted with Greek lidded urn, enamel Roman numeral button dial inscribed La Societe Ouvriere.



337

A French gilt and porcelain lyre shaped clock with gilt ormolu swagged decoration.



Lot No **Description**
338 An American Ansonia Clock Co. gingerbread mantle clock.



339 A French Garrard & Vignon console clock with green and floral painted body and scrolled ormolu mounts with original stand.



340 French Black Forest cast metal mantle alarm clock modeled with wolves chasing sheep surmounted with wolf in the forest.



341 A small French gilt and green enamel oriental designed bedroom clock with brass inscription.



342 1935 Walther & Sohne blue glass Schmetterling (butterfly) vase.



343 Art deco Heinrich Hoffman perfume bottle with engraved dancing girl stopper.



Lot No	Description
344	A large pair of unusual Dutch girl shaped amber glass candlesticks.
345	Libochovice amber glass vase formed with art deco style linked armed girls.
346	Libochovice peach glass vase formed with art deco style linked armed girls.
347	Walther & Sohne table centrepiece bowl, 3 Graces.
348	Walther & Sohne art deco amber glass bowl modeled with 2 girls holding the bowl.
349	1930's pressed blue glass vase on stand with embossed bird and floral designs.



Lot No

Description

350 1935 Walther & Sohne peach Schmetterling vase.



351 1930's Josef Inwald frosted glass water maidens vase.



352 1930's Czech green glass specimen vase with modeled semi nude girl.



353 A pair of oak framed coloured prints by Birket Foster The Rustic Style and Wild Roses.



354 Large metal framed Lowri print.



355 An Edwardian oak framed print of a Jewish harvest by Henry Ryland.



Lot No

Description

356

A pair of coloured prints of water scenes from the original paintings by Enrique Serra mounted in oak art nouveau frames with applied bullrushes and waterlilies.



357

A framed watercolour by Retford artist Sydney Wright, Ship Court, Gainsborough.



358

Framed watercolour by Retford artist Sydney Wright, Parish Church from North Street.



359

1930's 5 piece silver backed brush set by A.E. Poston & Co. Ltd., Birmingham 1931.



360

A pair of pierced silver specimen vases by Horris Woodward & Co. Ltd., London 1903. 232g (bare weight without liners). One blue glass liner damaged.



361

A pair of Edwardian engraved glass specimen vases with Birmingham silver rims.



Lot No

Description

362

Continental silver lidded jug of wrythen form with shell shaped thumb hinge and scrolled decoration, 252g including insulated handle.



363

An art deco style engine turned silver cigarette box by Collingwood & Sons, Birmingham 1938. 190g.



364

A modern London silver photo frame by S.F. Limited, 1992.



365

A silver desk inkwell by James Deakin & Sons, Chester 1916.



366

3 silver early Victorian dessert spoons by Charles Wallis, London 1853 and a similar London silver spoon, total weight 146g.



367

Cased set of 6 teaspoons with art nouveau bird feeding the chicks design by Barnet Henry Abraham, Birmingham 1912. 32g.



Lot No **Description**
368 5 James Deakin & Sons silver coffee spoons, Sheffield
1923, 36g.



369 A pair of Birmingham silver sugar scissors by Levi &
Salaman 1899, pair of continental 830 silver sugar nips
with shell formed grips and a pair of heavy weight scrolled
sugar nips by Cooper Bros., Sheffield. Total weight 76g.



370 2 silver napkin rings 32g.



371 A silver topped hob nail cut glass scent bottle, Birmingham
1912 with floral engraved decoration.



372 A silver charm bracelet with 13 assorted charms, 85g.



373 2 hobnail cut glass silver topped dressing table pots by
Jones & Crompton, Birmingham 1912.



Lot No **Description**
374 480 grams of pre-decimal 1946 silver coinage.



375 1909 gold sovereign.



376 9.10 grams, 9ct gold chain and earring.



377 11.30 grams, 22ct gold wedding bands.



378 Gents 9ct gold wristwatch, ladies 9ct gold wristwatch,
ladies 9ct gold watch and strap and a ladies 9ct gold
wristwatch and rolled gold bracelet.



379 2 silver bladed mother of pearl fruit knives.



Lot No **Description**
380 An 18ct ladies dress ring 2.2g.



381 9ct gold scales charm, 9ct eternity ring and a 9ct gold emerald ring. 6.8g including stones.



382 9ct gold fox head tie pin.



383 18ct gold diamond and opal dress ring.



384 18ct gold ladies dress ring with 5 platinum mounted diamonds.



385 4 various Victorian bog oak mourning brooches.



Lot No

Description

386

Vintage Parker 51 fountain pen.



387

Vintage engine turned gold plated Waterman fountain pen with 18ct nib.



388

2 pairs and a single silver napkin ring, various assay marks, 54g.



389

Large gold plated locket with floral scroll and fern leaf engraved decoration.



390

A large gold plated cameo pendant with frilled filigree mount.



391

An engraved 9ct gold hinged bangle, 10.3g.



Lot No **Description**
392 18ct gold ladies dress ring with outer 12 diamond cluster, 6 inner rubys and central diamond.



393 A large 9ct gold ladies 5 stone opal ring, set in an engraved bridge.



394 15ct good luck horseshoe tie pin.



395 Ladies silver fob watch with floral and acanthus engraved case and gilded enamel dial.



396 Victorian 15ct plated locket brooch, silver chain, gentleman's gilt metal watch chain, Scandinavian studio necklace and brooch, WWI service brooch and a memorial locket.



397 3 Henry Atkins, Sheffield silver table condiments, mustard pot 1918, salt 1907 and pepperette 1919. Silver weight 186g.



Lot No

Description

398

Birmingham silver 3 piece wrythen form cruet set by Joseph Gloucester Ltd, assay 1909. Silver weight 114g.



399

Small mixed lot to include 9ct gold chain and locket, silver ring, silver spoon brooch, miniature fruit knife, silver and gold metal charms and a small enamel compact.



400

A collection of military and Royal Air Force cap badges, brooches, pins, etc.



401

Scandinavian white metal Studio jewellery necklace.



402

Collection of cupro nickel decimal and pre-decimal coinage, Festival of Britain Crown, Jubilee Crown and 2 coin holders.

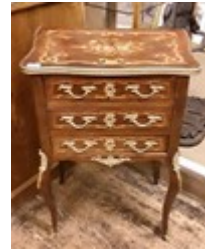


403

An unusual cast iron stick stand modeled as a boy holding a snake.



Lot No **Description**
404 A 20th century French style inlaid 3 drawer side chest with gilt and ormolu mounts.



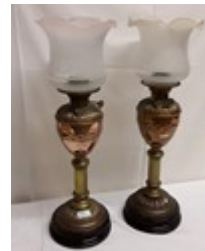
405 An unusual Victorian oil lamp with egg formed body supported by 3 grotesque claw footed birds with cream glass drop in front, etched shade with later electrical conversion.



406 Victorian walnut Vienna style wall clock with split turned columns, galleried decoration, Eagle pediment with art nouveau design gilt and enamel Arabic numeral dial.



407 Victorian pair of brass column and embossed decorated bowl, Martins patent, oil lamps with etched shades.



408 1930's oak small size barley twist gate leg table.



409 An Edwardian style brass table lamp with etched tulip shade and melon top column.



Lot No

Description

410

An elm turned legged kitchen stool.



411

A large walnut cased Vienna wall clock with split wrythen columns and mirrored shelf wings with Eagle pediment.



412

A large gilt framed oil on canvas copy of Elizabeth Butler's Charge of the Royal Scots Greys at Waterloo.



413

Set of wrought iron balance scales.



414

Victorian leather bound calling card album.



415

Vintage postcard album of mixed genre, 80 postcards to include Albert Carnell, D. Tempest, G.F. Christie, Madge Williams, etc.



Lot No

Description

416

Vintage postcard album of comedy postcards, Fred Spugin, T. Gilson, Mabel Lucy Atwell, etc., over 100 postcards.



417

3 interesting albums of post war overseas military life to include Royal Air Force, Aboukir Boat Club, Middle East and its RAF bases and other connected postcards, photographs and ephemera.



418

Victorian calling card album and a small photograph album.



419

2 vintage photo and autograph albums, a collection of World War and other embroidered postcards and various vintage postcards.



420

Box of vintage vinyl 45rpm records of mixed genre to include Tom Jones, Nat King Cole, Teddy King, Clive Dunn, etc.



421

20 vintage Gainsborough Trinity football programmes.



Lot No

Description

422

WWI printed silk roll call of Gainsborough's Men Serving in the Army and Navy before 1915.



423

Vintage British Air Forces pamphlet depicting all WWII serving aircraft.



424

An album of approximately 200 novelty postcards to include Bonzo, Mabel Lucy Atwell, etc.



425

A rare album of Fix-Masseau 12 limited edition poster lithographs Venice Simplon Orient Express in fitted presentation box and in mint condition. Copy no. 65/200.



426

Collection of vintage ephemera, newspapers and magazines, Chums, Punch, London Illustrated News, Chambers Journal, Strand magazine, etc.



427

A collection of 14 assorted black and white plates to include Une Laparotomie with index naming the surgeons and a similar hospital print, Victorian ladies portraits, Prince Albert, etc.



Lot No **Description**
428 Victorian folding wool winder with cast iron China man base.



429 Set of 3 vintage teak G Plan nesting tables.



430 1970's teak Stonehill low sideboard and matching extending table and chairs.



431 Large gilt framed unsigned oil on canvas of a Venetian harbour scene.



432 Large Victorian spelter modeled clock "The Whaler" with striking ALM movement, brass and enamel Arabic numeral dial.



433 A pair of French spelter figures "Ecole Buissonniere".



Lot No **Description**
434 1930's oak Jacobean style 4 drawer bedroom chest.



435 A large pair of French spelter figures from the original bronze by J. Scotte "Renommee" and "Paix".



436 An unusual German walnut 1970's dining room table and 6 chairs.



437 A pair of Reuge Italian inlaid musical sewing boxes.



438 An Edwardian brass and iron coal scuttle with embossed brass owl decoration complete with turned handle shovel.



439 Set of 4 1930's Queen Ann leg vase back dining room chairs.



Lot No **Description**
440 Gilt framed signed print of 19th century French soldiers.



441 A large pair of Victorian ewers with gilt painted wading Herons with lions mask handles (both cracked).



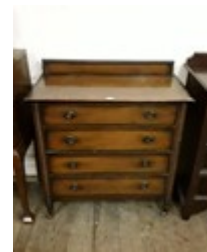
442 A pair of bronzed yellow metal, rams head vase holders with green blown glass vessels.



443 A highly decorative brass table lamp with adjustable light with flared glass shade.



444 1930's oak Jacobean style 4 drawer bedroom chest.



445 A pair of Georgian oak carved bar back dining chairs.

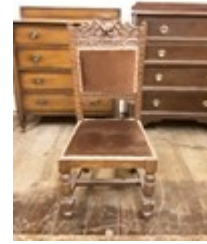


Lot No

Description

446

An Edwardian carved oak single dining room chair.



447

A Georgian oak Wainscot type armchair with arcaded carved back panel and matching front rail.



448

Gilt painted French Empire style begere panelled boudoir chair with a button brocade covering on turned reeded legs.



449

A pair of oak and elm bobbin bar back country solid seated kitchen chairs.



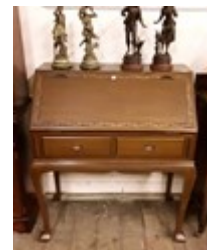
450

An early 20th century round seated turned leg and back kitchen chair.



451

1950's Far Eastern cherry wood Queen Ann leg fall front bureau.



Lot No **Description**
452 A pair of French spelter figures from the original bronze by Bruchon, girl and butterfly and boy with bird.



453 2 framed oil on boards Henry VII and Edward IV.



454 2 French spelter figures "Coup De Vent" and "Coup De Soleil".



455 Modern mahogany Regency style cupboard bookcase,.



456 Ox blood leather Chesterfield wing chair.



457 A pair of carved back and seat barley twist hall chairs.



Lot No

Description

458 Edwardian mahogany and inlaid bedroom chair.



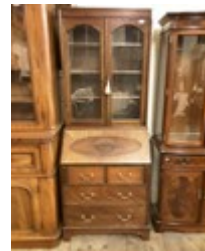
459 Edwardian mahogany bedroom chair.



460 A Far East teak carved folding magazine rack.



461 1930's mahogany bureau bookcase.



462 Victorian round cornered mahogany secretaire bookcase.



463 1950's mahogany flame veneer 2 door wardrobe with single lower drawer.



Lot No

Description

464

A solid oak turned leg nest of 3 tables.



465

An early 20th century Jacobean style 2 drawer dresser base.



466

Edwardian 2 tier inlaid mahogany occasional table.



467

Oak and mahogany longcase clock with painted dial, swan neck pediment, movement by Stephenson of Nottingham.



468

A pair of gentleman's wing chairs on short ball and claw feet.



469

Gilt painted French rococo style armchair on scrolled cabriole legs.



Lot No

Description

470

An embossed copper aspidistra pot.



471

Brass and copper hanging oil lamp with Iris burner.



472

A decorative hanging oil lamp with milk glass vessel and mushroom shade.



473

Victorian brass hanging gas lamp with pink flared rim glass shade.



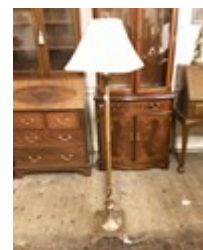
474

Mahogany Regency style arched door, open top corner cupboard with slider.



475

Modern bronzed metal standard lamp.



Lot No

Description

476

1930's oak Larkins desk.



477

An early Victorian rococo style 3 shelve wall mirror.



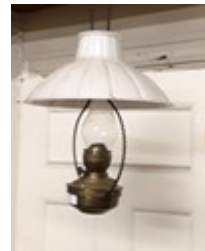
478

Victorian brass hanging oil lamp with white mushroom shade.



479

Brass hanging oil lamp with twisted frame and melon shaped milk glass shade.



480

Georgian oak Queen Ann legged low boy with pinched corner top.



481

An early Victorian oak Queen Ann legged low boy with shaped frieze.



Lot No **Description**
482 An Edwardian inlaid carver chair with boxwood crossbandings and vase motif.



483 A mahogany 4 drawer apothecary chest.



484 Modern Tiffany style leaded glass light shade.



485 A bank of 4 oak filing drawers.



486 2 vintage fitted leather gentleman's travelling cases and a small leather stationery case.



487 A leather Gladstone bag.



Lot No

Description

488 1930's beaded oak barley twist leg sideboard base.



488a A pair of large modern oriental decorated jardinieres on stands.



489 1950's walnut single door china cabinet.



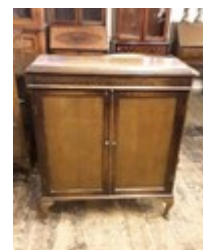
490 Decorative gilt oval framed portrait of a young Georgian boy.



491 1960's painted hardboard and applied plywood modern city harbour scene signed Ruiz 70.



492 1930's oak 2 door Queen Ann legged cupboard.



Lot No

Description

493

1920's oak narrow 5 shelve bookcase with beaded decoration.



494

A large distressed oak baulster turned leg refectory table with heavy stretcher and bread board ended top.



495

A set of 6 elm and ash 20th century Windsor chairs with pierced back splats and cow horn stretchers. (4 chairs plus 2 carvers).



496

1960's teak framed armchair.



497

A modern beechwood Grandmother rocking chair.



498

A modern French style pink draylon button back armchair.



Lot No **Description**
499 Victorian rise and fall invalid table by Alfred Carter, Holborn Viaduct, London.



500 An early 19th century 5 drawer oak bracket foot bedroom chest.



501 A pair of spelter figures "Laboureur" and "Semeuse".



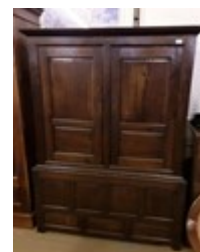
502 Gilt framed oil on canvas continental harbour scene.



503 A pair of circular art nouveau hammered copper framed prints "Flowers of the Field" and "The Sea Hath Its Pearls". 67cm diameter each.



504 A Georgian oak fielded panel livery cupboard.



Lot No**Description**

505

An early 19th century oval oak gate leg table.



506

A small oak deep carved corner cupboard with central lozenge.



507

Small Georgian mahogany bracket foot chest of 4 graduated oak lined drawers with original brasses.



508

Pair of Edwardian mahogany and inlaid begere seated bedroom chairs.



509

Set of 5 mid 20th century elm and ash kitchen Windsor chairs with cow horn stretchers.



510

Late Victorian mahogany coal scuttle with embossed brass owl decorated lid.



Lot No **Description**
511 Mahogany dish top wine table with turned fluted and melon tripod base.



512 Small Edwardian walnut revolving bookcase.



513 Georgian oak carved panel coffer.



514 Small oak carved stretchered stool.



515 Late Victorian walnut compactum wardrobe with 7 drawer pigeon hole and cupboard central section flanked by 2 mirror doors.



516 An early 20th century art nouveau carved court cupboard.



Lot No**Description**

517

A large brass 7 light sloping altar candelabra with interwoven serpents.



518

A heavy brass 5 light altar candle holder with grapes and vine decoration.



519

Mahogany William IV Scottish dressing table mirror.



520

Georgian oak single drawer side table.



521

Victorian walnut nursing chair with turned and reeded back supports and front legs with carved and pierced back splat.



522

An early 20th century mahogany sofa table with single frieze drawer, Greek key carved stretchered and reeded splayed supports.



Lot No	Description
523	Victorian brass oil lamp with engraved design body and unusual female mask handles with Mayan headress.
524	Victorian black slate mantle clock with brass Corinthian columns with French Samuel Marti striking movement.
525	Marble based bronze statue from the original Louis Guillaume Fulconis, L'Allegorie de la Fortune.
526	Georgian oak 4 drawer bracket foot bureau with step and well interior.
527	A pair of French spelter figures, flute player and flower seller.
528	An oriental enamel bottle vase with orange ground and bird and floral decoration.



Lot No

Description

529

French figured walnut bonheur du jour with decorative ormolu mounts and gallery.



530

Victorian oil lamp with meloned brass base, embossed peach vessel, Sherwoods burner and etched glass flared shade.



531

Cast iron oil lamp with art nouveau bird of prey design and heron handles with drop in font and Wright & Butler burner with etched glass shade.



532

A brass art nouveau decorated oil lamp with green decorated ovoid vessel and milk white flared rim mushroom shade.



533

A cast metal decorative drop in font oil lamp with grapes and vine, feeding birds and wolf mask decoration.



534

Georgian mahogany 4 drawer secretaire desk with fitted interior.



Lot No **Description**
535 Victorian Swiss ten airs mechanical music box with inlaid top in working condition.



536 French marble top inlaid commode chest with ormolu mounts.



537 A French marble topped 3 drawer inlaid commode chest with ormolu mounts.



538 A pair of French spelter figurines "Improvisation" and "Muse des Bois" by L. & F. Moreau.



539 French walnut and inlaid Queen Ann legged card table with ormolu mounts.



540 An elm and ash Captains chair.



Lot No

Description

541

Pair of rush seated oak bedroom chairs.



542

Pair of high quality walnut side chairs with button upholstered shield backs, reeded column supports and front legs with floral motifs.



543

A pair of French gilt wood salon chairs.



544

An upholstered gilt and cream framed French style 2 seater couch.



545

Edwardian mahogany and burr walnut framed 2 seater button back couch on short cabriole legs.



546

A slate mantle clock with classical brass decoration including biblical panels and lions mask dial surround with Samuel Marti French medal winning movement.



Lot No	Description
547	A cast iron drop in font classical decorated oil lamp with flared etched glass shade.
548	Victorian inlaid wall clock with mirrored drop dial and turned column supports.
549	Victorian mahogany and inlaid drop dial wall clock.
550	Victorian mahogany and inlaid drop dial wall clock.
551	Large Edwardian 5 drawer bedroom chest with decorative scrolled brass handles made by Eyre & Sons Limited, cabinet makers Chesterfield.

